

419

WEST 13TH ST
MEATPACKING DISTRICT
NYC



17,500+ SQ FT
BUILD YOUR OWN SPACE
IN A COVETTED
MEATPACKING DISTRICT
LOCATION

5 MILLION
PEOPLE VISIT THE
HIGHLINE
ANNUALLY



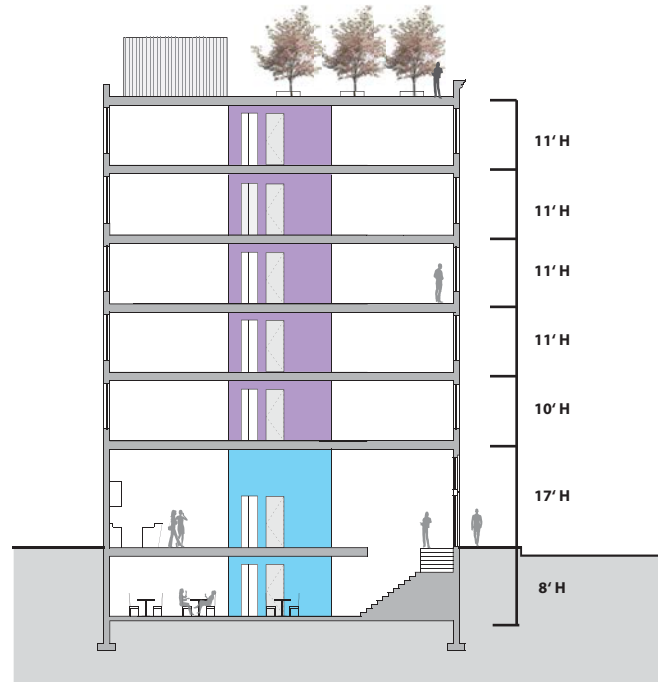
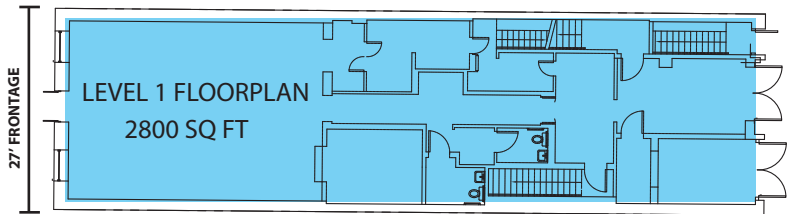
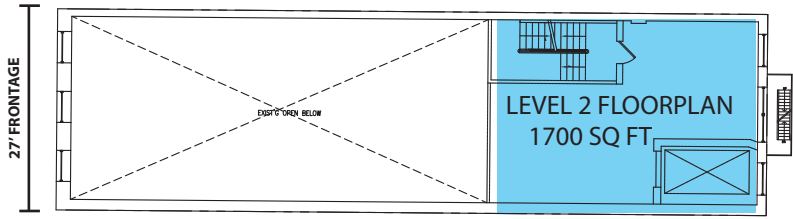
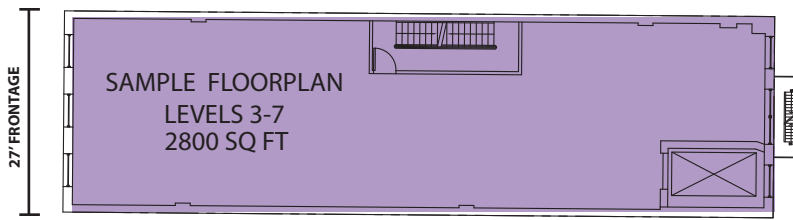
EXCLUSIVE LEASING AGENTS:

STEPHEN STEPHANOU
212-292-5572
SSTEPHANOU@CRTL.COM

THIBAUD VEIL
646-412-1882
TVEIL@CRTL.COM

NEIGHBORING TENANTS: The Whitney Museum, The Standard Hotel, Chelsea Market, Buddakan, Apple, Diane von Furstenberg, SOHO House, The Gansevoort Hotel, Theory, Spice Market, La Perla, Alice & Olivia, Jeffrey, Christian Louboutin

CROWN RETAIL SERVICES 767 FIFTH AVENUE, 24TH FLOOR, NEW YORK, NY 10153 212-292-9300



- NO INTERIOR COLUMNS
- COMMERCIAL BASEMENT
- ROOFTOP TERRACE

No warranty or representation, express or implied, is made as to the accuracy of the information contained herein, and the same is submitted subject to errors, omissions, change of price, rental, or other conditions, withdrawal, without notice and to any special listing conditions, imposed by our principals, including but not limited to the rate and manner of payment of commissions for particular offerings imposed by principals or duly licensed brokers. All areas and dimensions shown are approximate. Receipt of this information does not constitute, imply or suggest a hiring by Crown Retail Services, LLC nor entitle the recipient to a commission or fee. For additional information, please contact Crown Retail Services, LLC at 212-292-9300. The depiction in the above photograph of any person, entity sign, logo or property (other than Crown Retail Services) is incidental only, and is not intended to connote any affiliation, connection, association, sponsorship or approval by or between that which is incidentally depicted and Crown Retail Services.



FAST FACTS

13.9 MILLION
ANNUAL RIDERSHIP

4.4 MILLION SQ FT
OF OFFICE SPACE

1.600 PEDESTRIANS
PER HOUR

1,742
HOTEL ROOMS

300,000
ANTICIPATED VISITORS TO
THE NEW WHITNEY
MUSEUM OF ART